

# REQ Receptacles and EPJ Plug Factory Sealed



A QUALITY PRODUCT

## EXPLOSIONPROOF

For UL.60079-1 Standard Class I,II Div.1 and 2 Groups C,D,E,F and G

For IEC.60079-0/1 Standard Zone 1 and Zone 2



### Technical data

Type of Protection: Ex d IIA T6

Conforming to : Standards IEC 60079-0 /1 or UL 60079-1

Marking for test : Ex II2G

Degree of Protection : IP66 acc.To IEC 60529

Rated Voltage : up to 600 V-

Rated current : up to 63A.

Electrical rating range : 16 - 63A.

Type : REQ , RPJ

Protection class for UL. : Class I, Division1 or 2 Group.C,D

Class II, Division 1 or 2 Groups.E,F,G

Class III

Protection class for IEC : Zone1and Zone 2

ONE GANG



TWO GANG



### Descriptions :

The RPJ receptacle and REQ plug Series are suitable for:  
hazardous locations due to the presence of flammable gasses or vapors.  
installation in petroleum refineries, chemical plants processing of grain,  
flour of starch, and storage areas where hazardous substances  
are handled.  
damp, wet or corrosive locations.  
area where heavy duty receptacles and plugs are necessary.

REQ RECEPTACLES

EPJ PLUG



### Features:

- Angle type receptacles, 3/4 inch NPT dead for 16 - 32 AT. And 1.1/4" inch NPT through feet 40 - 63 AT.
- Single gang or two gangs on request. (40 - 63AT. Only one Gang)  
Two mounting lugs.
- Receptacles and plugs are equipped with a mechanism which prevents with drawal of plug until the release knob is pressed.
- Plug have extra long grounding poles, make contact first and break contact last for maximum safety.
- Factory sealed receptacles to simplify installation and wiring  
external seals are not required.
- The key slot provided in the receptacles engages the key of the plugs permitting entrance in only one position.



REQ RECEPTACLES

For 40 - 63 AT.

### Standard Materials:

- Receptacle housing, cover and plug exteriors - Copper-free aluminium
- Insulation - Bakelite
- Solid split-type contact - Brass
- Mechanism and bolts - Stainless steel

### Standard Finishes:

- Copper-free aluminium - Epoxy-polyester powder
- Brass - Silver plated
- Stainless steel - Natural

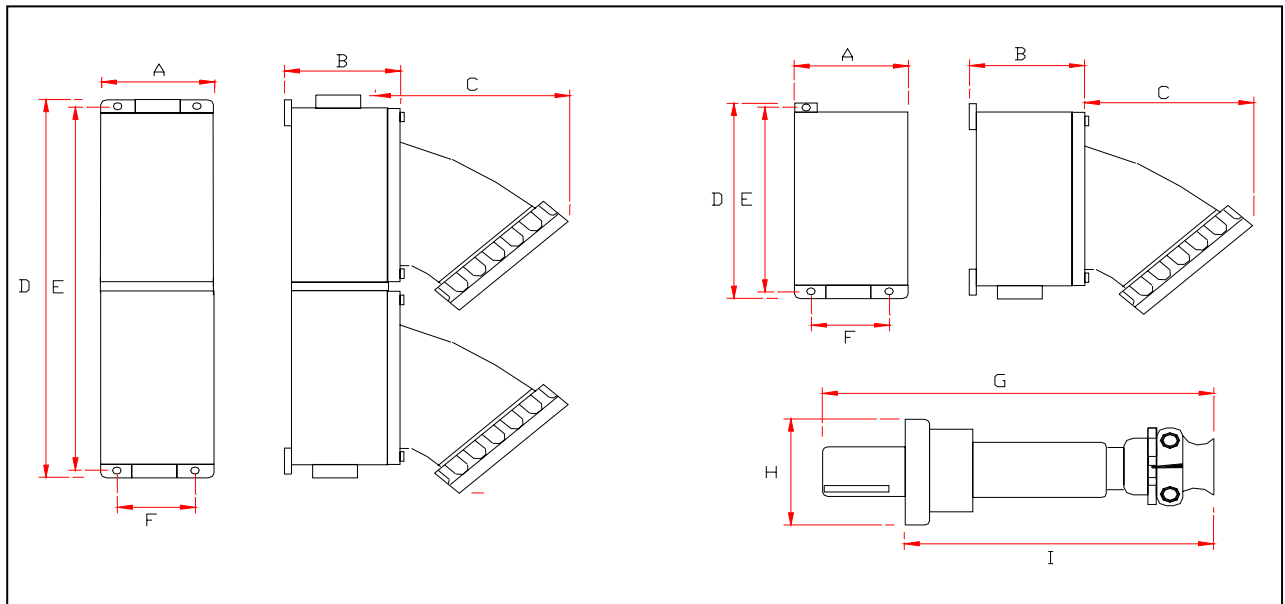


# REQ Receptacles and EPJ Plug Factory Sealed

EXPLOSIONPROOF

For UL.60079-1 Standard Class I,II Div.1 and 2 Groups C,D,E,F and G

For IEC.60079-0/1 Standard Zone 1 and Zone 2



Dimension in mm.

| Amp. Trip                   | ONE GANG |     |     |     |     |     |     |    |     | TWO GANG |    |     |     |     |    |     |    |     |
|-----------------------------|----------|-----|-----|-----|-----|-----|-----|----|-----|----------|----|-----|-----|-----|----|-----|----|-----|
|                             | A        | B   | C   | D   | E   | F   | G   | H  | I   | A        | B  | C   | D   | E   | F  | G   | H  | I   |
| <b>1PH / 2W / 3P (2P+G)</b> |          |     |     |     |     |     |     |    |     |          |    |     |     |     |    |     |    |     |
| 16                          | 90       | 73  | 162 | 177 | 155 | 70  | 153 | 75 | 110 | 90       | 73 | 162 | 350 | 295 | 70 | 153 | 75 | 110 |
| 20                          | 90       | 73  | 162 | 177 | 155 | 70  | 153 | 75 | 110 | 90       | 73 | 162 | 350 | 295 | 70 | 153 | 75 | 110 |
| 25                          | 90       | 73  | 162 | 177 | 155 | 70  | 153 | 75 | 110 | 90       | 73 | 162 | 350 | 295 | 70 | 153 | 75 | 110 |
| 32                          | 90       | 73  | 162 | 177 | 155 | 70  | 153 | 75 | 110 | 90       | 73 | 162 | 350 | 295 | 70 | 153 | 75 | 110 |
| 40                          | 160      | 193 | 210 | 100 | 90  | 137 | 252 | 90 | 180 | -        | -  | -   | -   | -   | -  | -   | -  | -   |
| 50                          | 160      | 193 | 210 | 100 | 90  | 137 | 252 | 90 | 180 | -        | -  | -   | -   | -   | -  | -   | -  | -   |
| 63                          | 160      | 193 | 210 | 100 | 90  | 137 | 252 | 90 | 180 | -        | -  | -   | -   | -   | -  | -   | -  | -   |
| <b>3PH / 3W / 4P (3P+G)</b> |          |     |     |     |     |     |     |    |     |          |    |     |     |     |    |     |    |     |
| 16                          | 90       | 73  | 162 | 177 | 155 | 70  | 153 | 75 | 110 | 90       | 73 | 162 | 350 | 295 | 70 | 153 | 75 | 110 |
| 20                          | 90       | 73  | 162 | 177 | 155 | 70  | 153 | 75 | 110 | 90       | 73 | 162 | 350 | 295 | 70 | 153 | 75 | 110 |
| 25                          | 90       | 73  | 162 | 177 | 155 | 70  | 153 | 75 | 110 | 90       | 73 | 162 | 350 | 295 | 70 | 153 | 75 | 110 |
| 32                          | 90       | 73  | 162 | 177 | 155 | 70  | 153 | 75 | 110 | 90       | 73 | 162 | 350 | 295 | 70 | 153 | 75 | 110 |
| 40                          | 160      | 193 | 210 | 100 | 90  | 137 | 252 | 90 | 180 | -        | -  | -   | -   | -   | -  | -   | -  | -   |
| 50                          | 160      | 193 | 210 | 100 | 90  | 137 | 252 | 90 | 180 | -        | -  | -   | -   | -   | -  | -   | -  | -   |
| 63                          | 160      | 193 | 210 | 100 | 90  | 137 | 252 | 90 | 180 | -        | -  | -   | -   | -   | -  | -   | -  | -   |

# REQ Receptacles and EPJ Plug Factory Sealed



A QUALITY PRODUCT

**EXPLOSIONPROOF****For UL.60079-1 Standard Class I,II Div.1 and 2 Groups C,D,E,F and G****For IEC.60079-0/1 Standard Zone 1 and Zone 2**

| Phase/Wire/Pole | Hub Size |      |           | Receptacle Cat.,No. |            | Plug Cat..No. |
|-----------------|----------|------|-----------|---------------------|------------|---------------|
|                 | AT       | Pole | NPT(inch) | One Gang            | Two Gang   |               |
| 1PH/2W/3P       | 16       | 2    | 3/4"      | REQ 121-16          | REQ 221-16 | EPJ 2116      |
| (2P + G )       | 20       | 2    | 3/4"      | REQ 121-20          | REQ 221-20 | EPJ 2120      |
|                 | 25       | 2    | 3/4"      | REQ 121-25          | REQ 221-25 | EPJ 2125      |
|                 | 32       | 2    | 3/4"      | REQ 121-32          | REQ 221-32 | EPJ 2132      |
|                 | 40       | 2    | 1"        | REQ 121-40          | -          | EPJ 2140      |
|                 | 50       | 2    | 1"        | REQ 121-50          | -          | EPJ 2150      |
|                 | 63       | 2    | 1.1/4"    | REQ 121-63          | -          | EPJ 2163      |
| 3PH/3W/4P       | 16       | 3    | 3/4"      | REQ 131-16          | REQ 231-16 | EPJ 3116      |
| (3P + G )       | 20       | 3    | 3/4"      | REQ 131-20          | REQ 231-20 | EPJ 3120      |
|                 | 25       | 3    | 3/4"      | REQ 131-25          | REQ 231-25 | EPJ 3125      |
|                 | 32       | 3    | 3/4"      | REQ 131-32          | REQ 231-32 | EPJ 3132      |
|                 | 40       | 3    | 1"        | REQ 131-40          | -          | EPJ 3140      |
|                 | 50       | 3    | 1.1/4"    | REQ 131-50          | -          | EPJ 3150      |
|                 | 63       | 3    | 1.1/4"    | REQ 131-63          | -          | EPJ 3163      |